

# Public Document Pack

South and West Plans Panel

Thursday, 21<sup>st</sup> December 2023

PowerPoint Presentation

This page is intentionally left blank

# SOUTH & WEST PLANS PANEL

Thursday 21st December 2023

Page 3



Agenda Item 7

# **APPLICATION: 22/03466/FU**

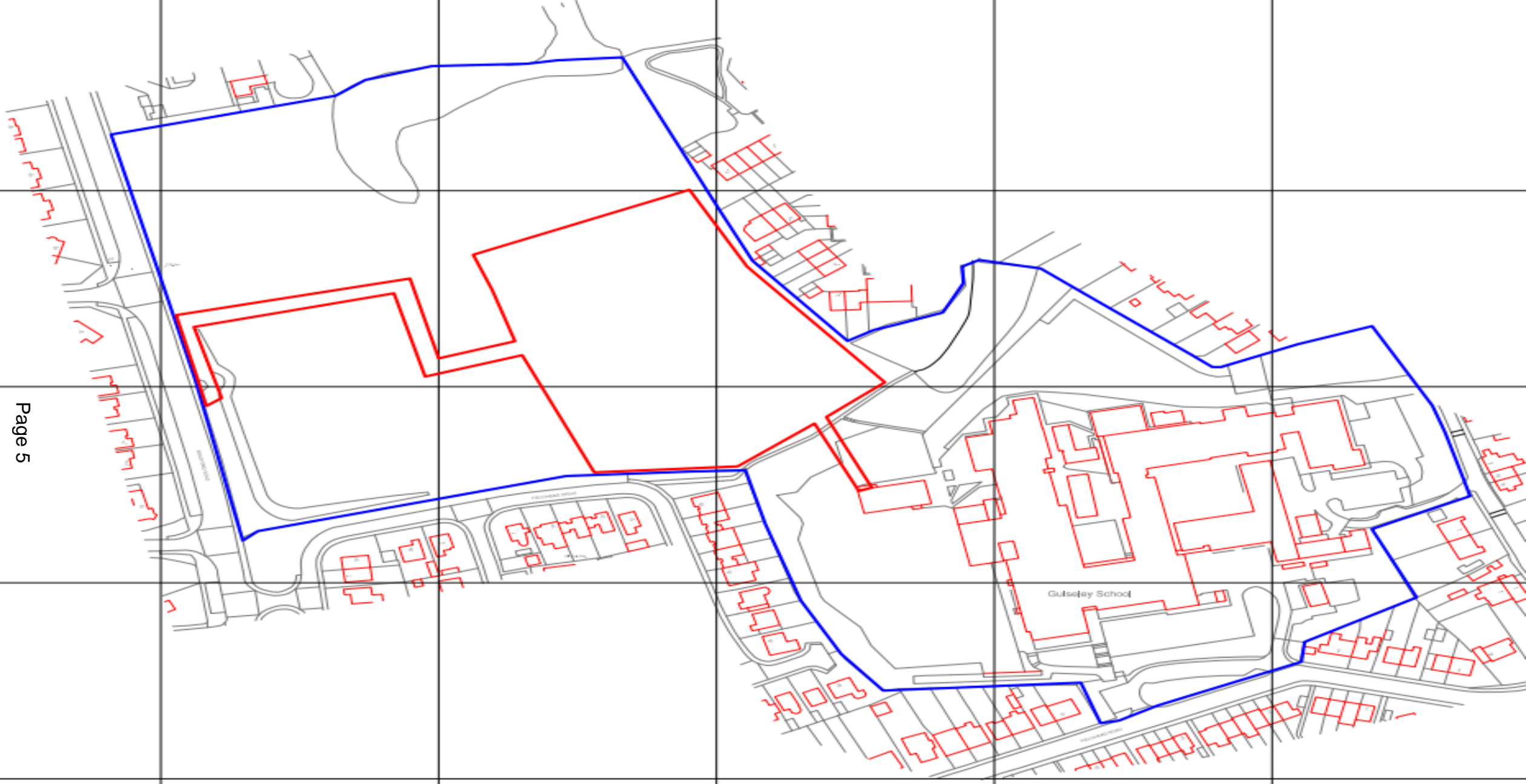
## **PROPOSAL**

**New artificial grass pitch with floodlighting; new emergency access; relocation of existing long jumps; associated landscaping works**

## **ADDRESS**

**Guiseley School  
Fieldhead Road  
Guiseley  
Leeds  
LS20 8DT**







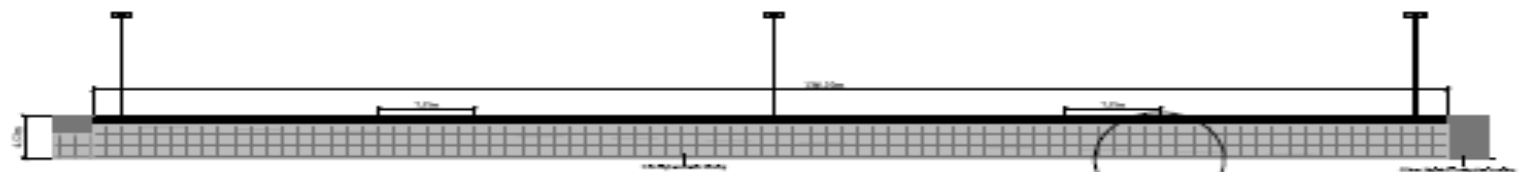








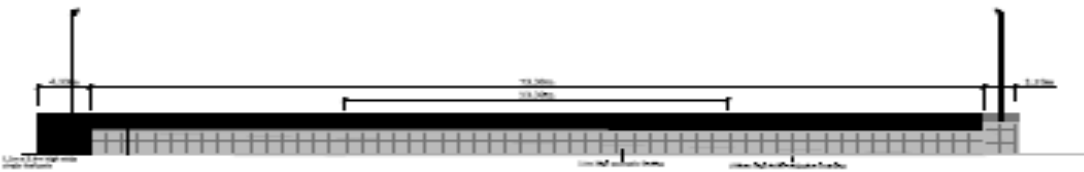
WEST ELEVATION • 1.250



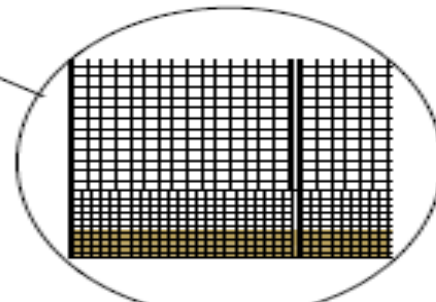
EAST ELEVATION • 1.250



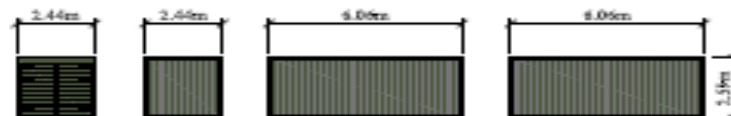
NORTH ELEVATION - 1.250



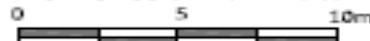
SOUTH ELEVATION - 1.250



Detail of Infill Mitigation Boarding • NTS



STORAGE CONTAINER • 1.100



Author	Checked
Drawn	Approved
Scale	Date



Project Name	Project No.
Client	Contract No.
Location	Drawn By
Scale	Checked By
Date	Approved By



For Clerk	
Guiseley School Proposed Elevations	
Author	Scale
Checked	Date
EA	E









Page 10

































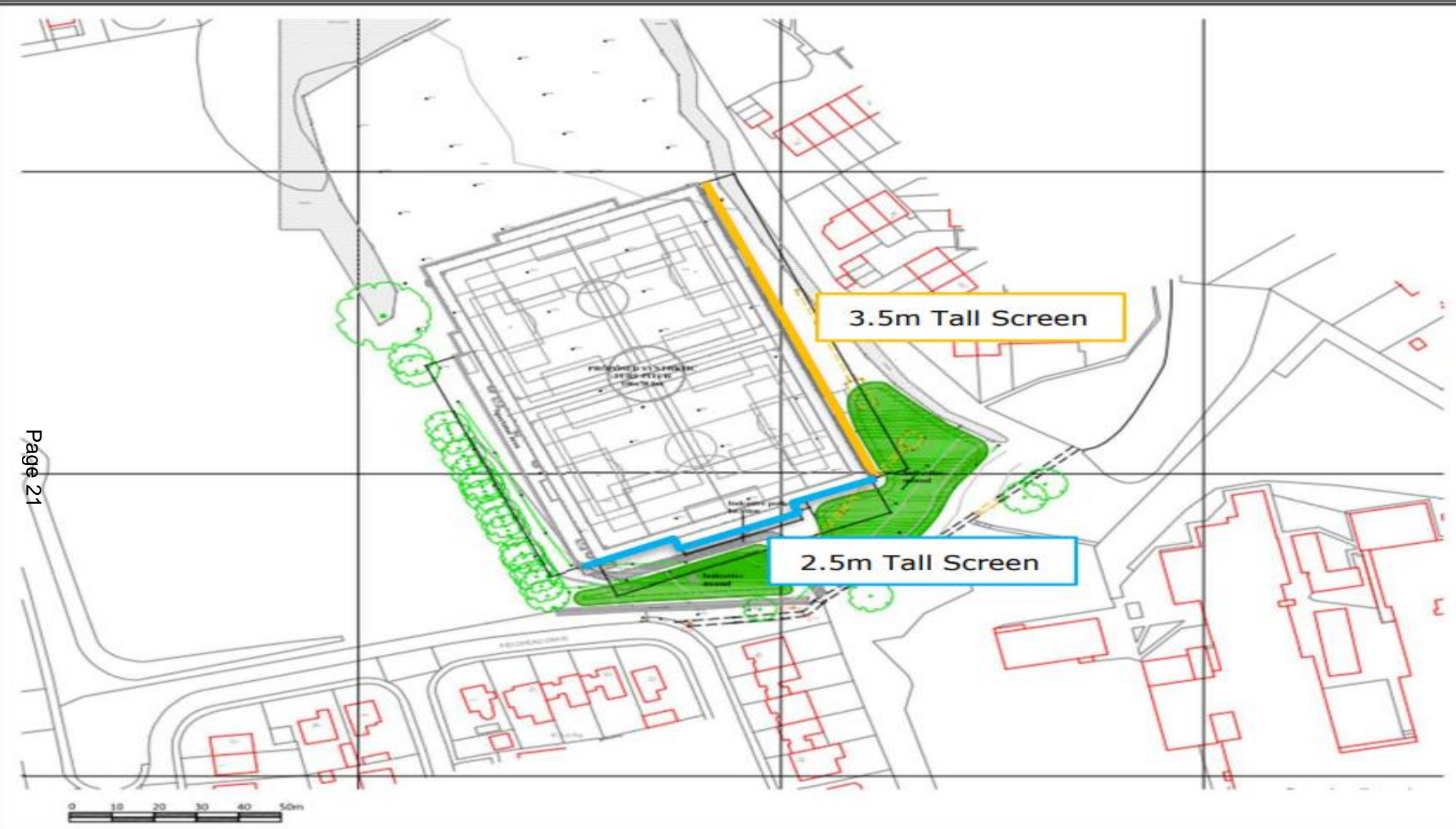












NOTES

0

10 20 30 40 50m

CCGrass

Site Clerk

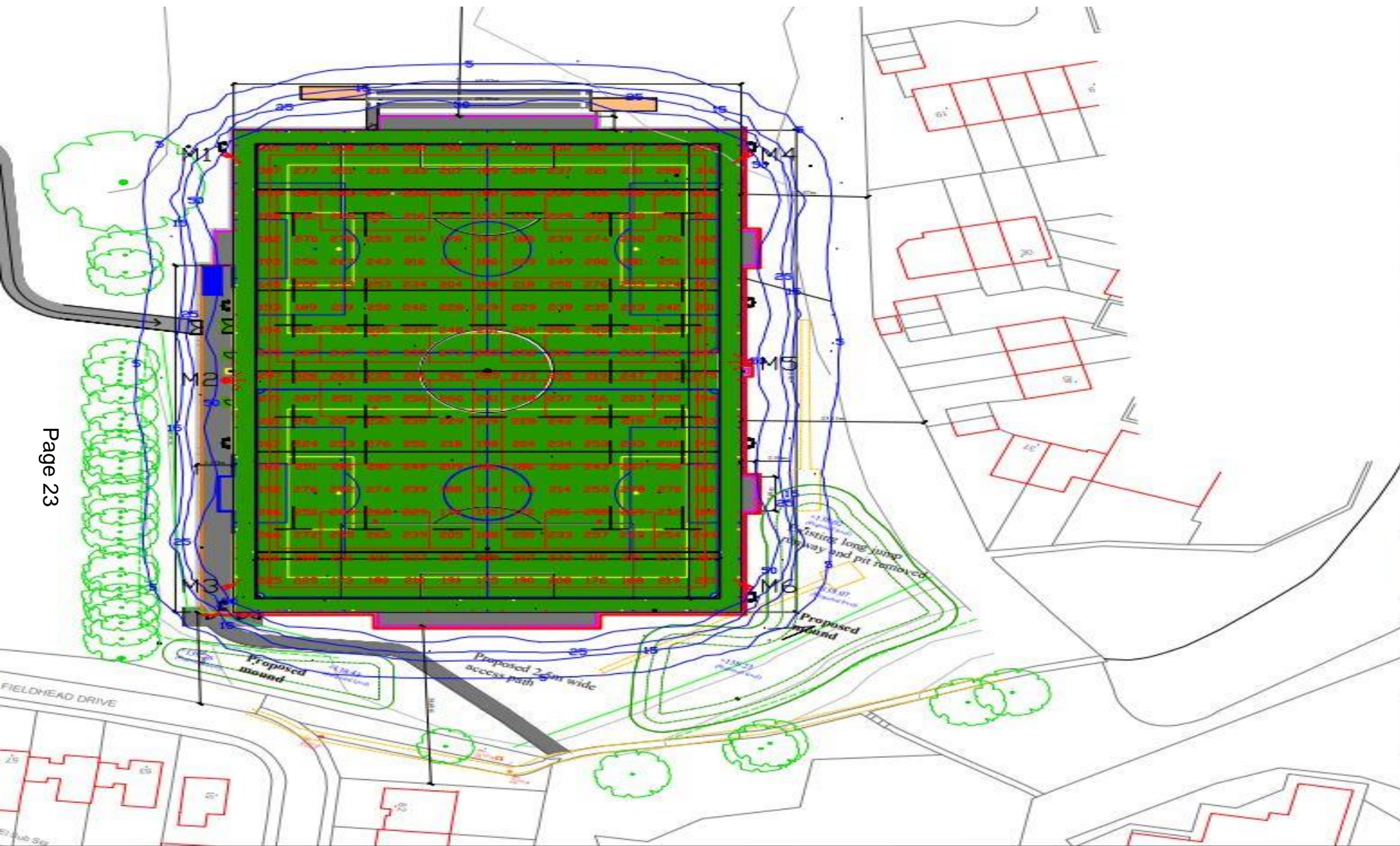
**Guiseley School**  
Proposed Site Plan

1:500	A1
04	









**Siteco LED - 5,000 Kelvin CRI70**

**Illuminance Levels**  
**Initial** -  
 (100hrs) E.I.ave = 232Lux  
**Maintained** -  
 (4000hrs) E.I.ave = 209Lux

**Uniformity**  
 Emin/Eave = 0.63

Grid values in Lux(initial).  
 Grid interval = 5m.  
 Contour values in Lux (initial).  
 Contours: 5, 15, 25, 50 Lux.

**Maintenance Factor = 0.90**

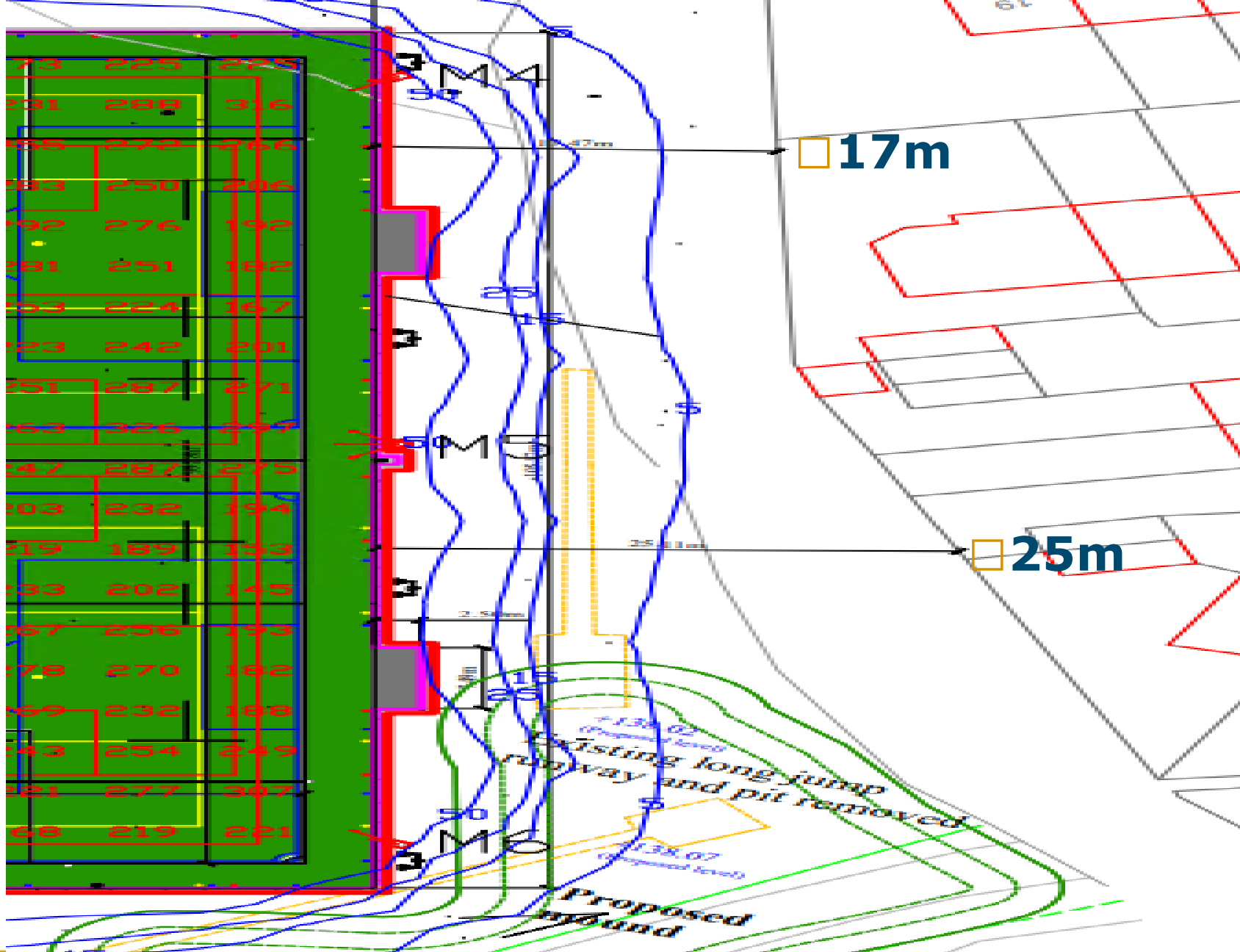
**HALLIDAY LIGHTING**  
[www.halliday-lighting.co.uk](http://www.halliday-lighting.co.uk)

**Project**  
 Guiseley School

**Drawing Title**  
 Proposed floodlighting

<b>Drawn By (print)</b> DS	<b>Date</b> 24/10/2022
<b>Project No</b> 3465	<b>Scale</b> 1:750 @ A3
<b>Drawing No</b> HLS3465	<b>Status</b> Proposal











# SOUTH & WEST PLANS PANEL

THURSDAY 21st December 2023

**END OF PRESENTATION**

Page 26

